

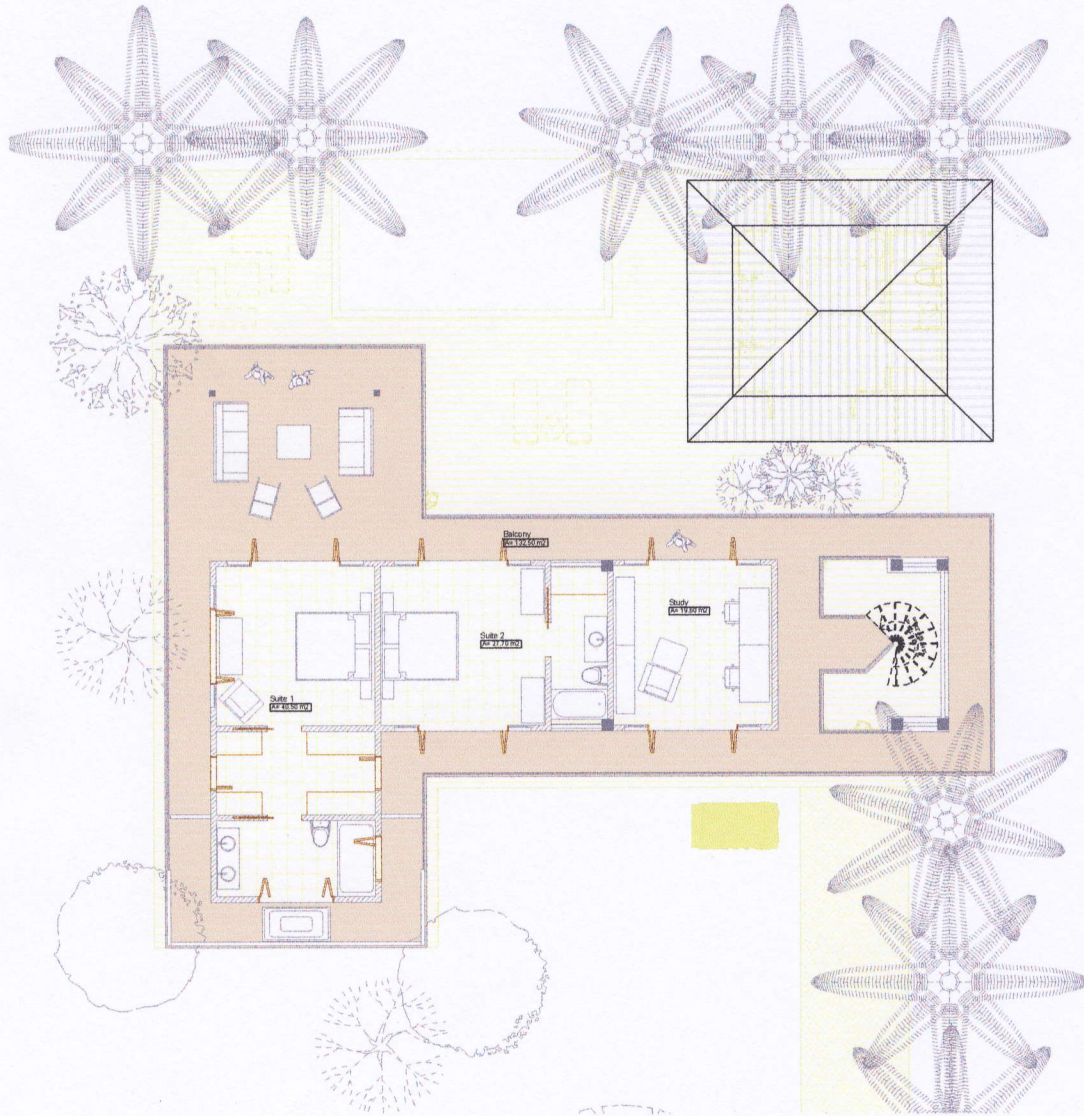


MODEL
PLAYA DEL MAGO
LOWER LEVEL





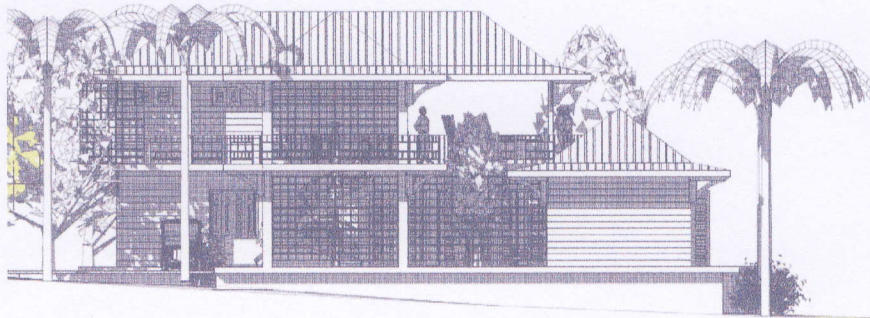
MODEL
PLAYA DEL MAGO
UPPER LEVEL





MODEL
PLAYA DEL MAGO
VIEWS AND AREAS

The Playa del Mago model is ideal for entertaining with the living room, dining, den and kitchen integrated in a large social space on the first level. All of these areas as well as a separate guest open onto an expansive deck and your choice of a pool or garden area. The incomparable master bedroom suite and study are upstairs. This design is ideal for lots that have relatively flat topography. As with our other plans all spaces are naturally lighted and enjoy cross ventilation.



CLOSED AREAS
SQUARE METERS 221.25
SQUARE FEET 2380.65

OPEN AREAS
SQUARE METERS 422.70
SQUARE FEET 4548.25

DRIVEWAY AND DECK AREAS MAY VARY WHEN THE MODEL IS LOCATED IN A PARTICULAR LOT



**arquitectura
& bioclima**

Linette Yanisselly